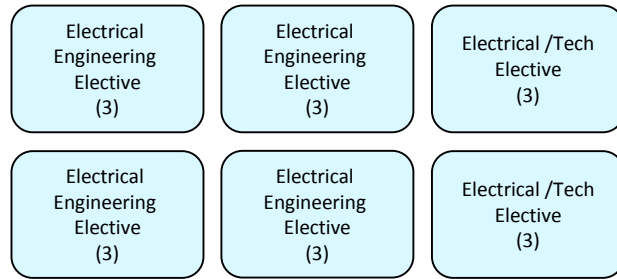


# Bachelor of Science in Electrical Engineering

engineering-advising@fau.edu • 561.297.2780 • dessa.fau.edu • ceecs.fau.edu



**Electrical Engineering Electives Options:**

- EEE 4340 Digital Electronics
- EEL 4216 Electric Power Systems
- EEL 4220 Electrical Machines
- EEL 4281 Photovoltaic Power Systems
- EEL 4360C High Frequency Amplifier Design
- EEL 4421 RF Devices and Circuits
- EEL 4433C RF and Microwave Lab
- EEL 4436C Microwave Engineering
- EEL 4461 Intro to Antennas
- EEL 4478 Electromagnetic Compatibility
- EEL 4519 Telecommunication Engineering
- CDA 4210 Introduction to VLSI
- EEL 4905 Directed Indepen. Study (3 crs)
- EEL 4930 Special Topics

**Technical Electives Options:**

- EGN 3343 Eng. Thermodynamics
- EGN 3311 Statics
- EEL 4949 Co-Op/Internship (3 sem. of 1 Cr)
- COP 3014 & L Found. of Comp. Science & Lab
- COP 3530 Data Structures & Algorithms\*
- COP 3813 Intro. to Internet Computing
- CDA 4102 Structured Computer Architecture
- CDA 4630 Intro. to Embedded Systems

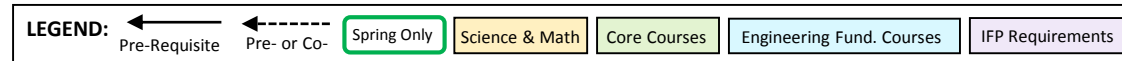
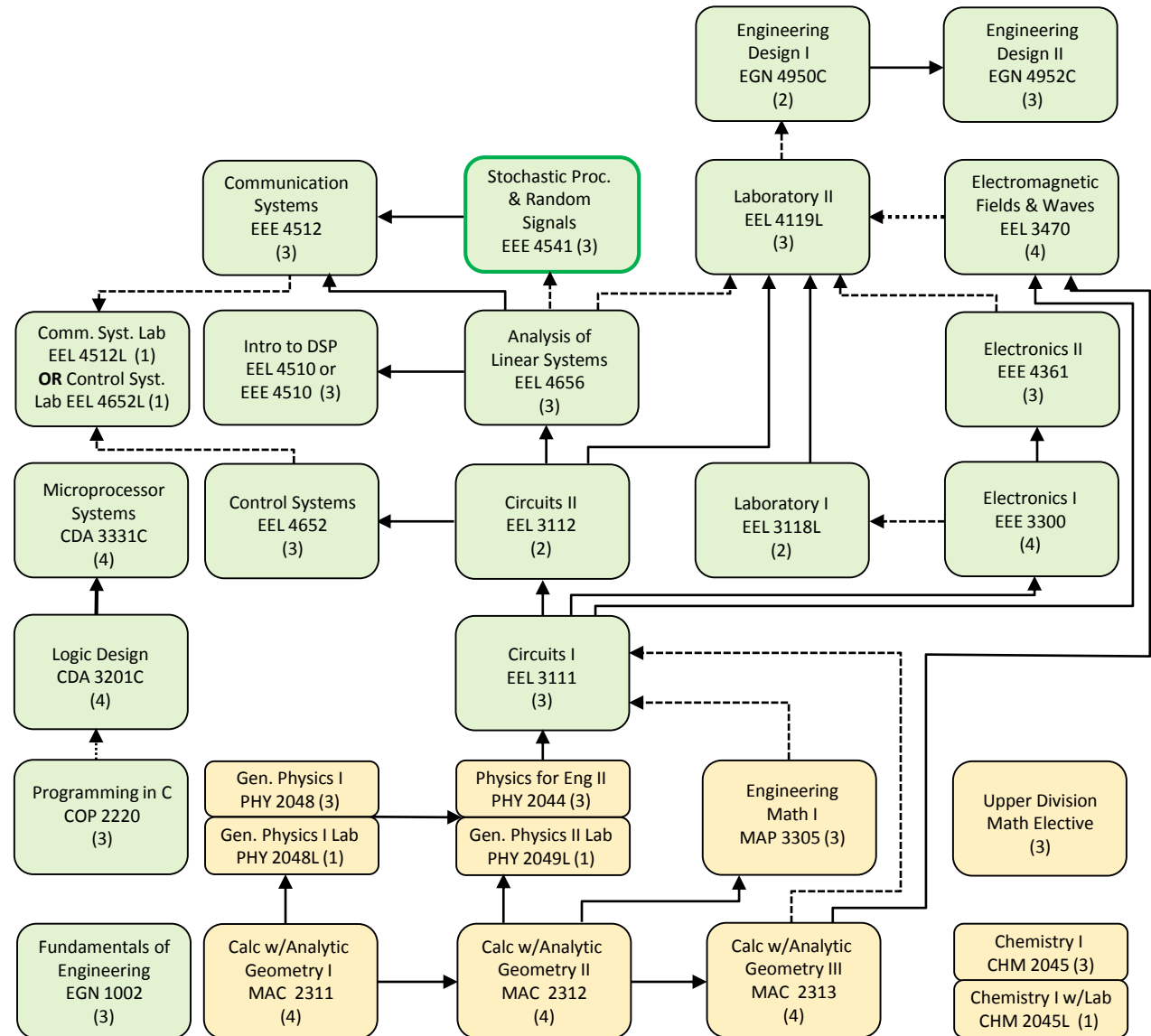
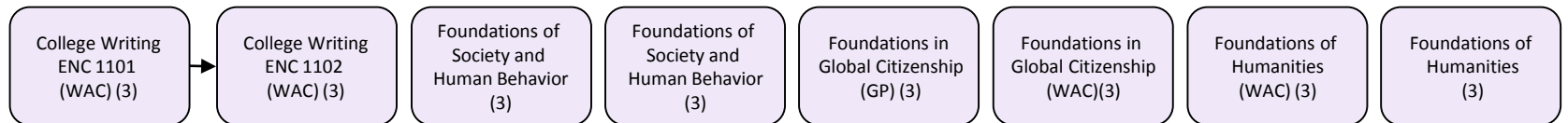
**Math Electives Options:**

- MAA 4200 Modern Analysis
- MAS 4301 Modern Algebra
- MAS 3203 Introductory Number Theory
- MAS 2103 Matrix Theory

All electives must be approved by your Academic Advisor  
\* Pre-requisite COP3014/L and MAD2104

- OTHER REQUIREMENTS:**
- At least 128 credits total.
  - At least 45 credits at senior institution.
  - At least 32 upper division EE credits from FAU.

**Foreign Language Admission Requirement**  
A GRADE OF "C" OR BETTER IS REQUIRED IN ALL CORE & MATH/SCIENCE COURSES.



This flowchart is reviewed periodically and is subject to change as new requirements become necessary to educate engineers. The information is intended to inform and is not a replacement for a degree audit conducted with an academic advisor.